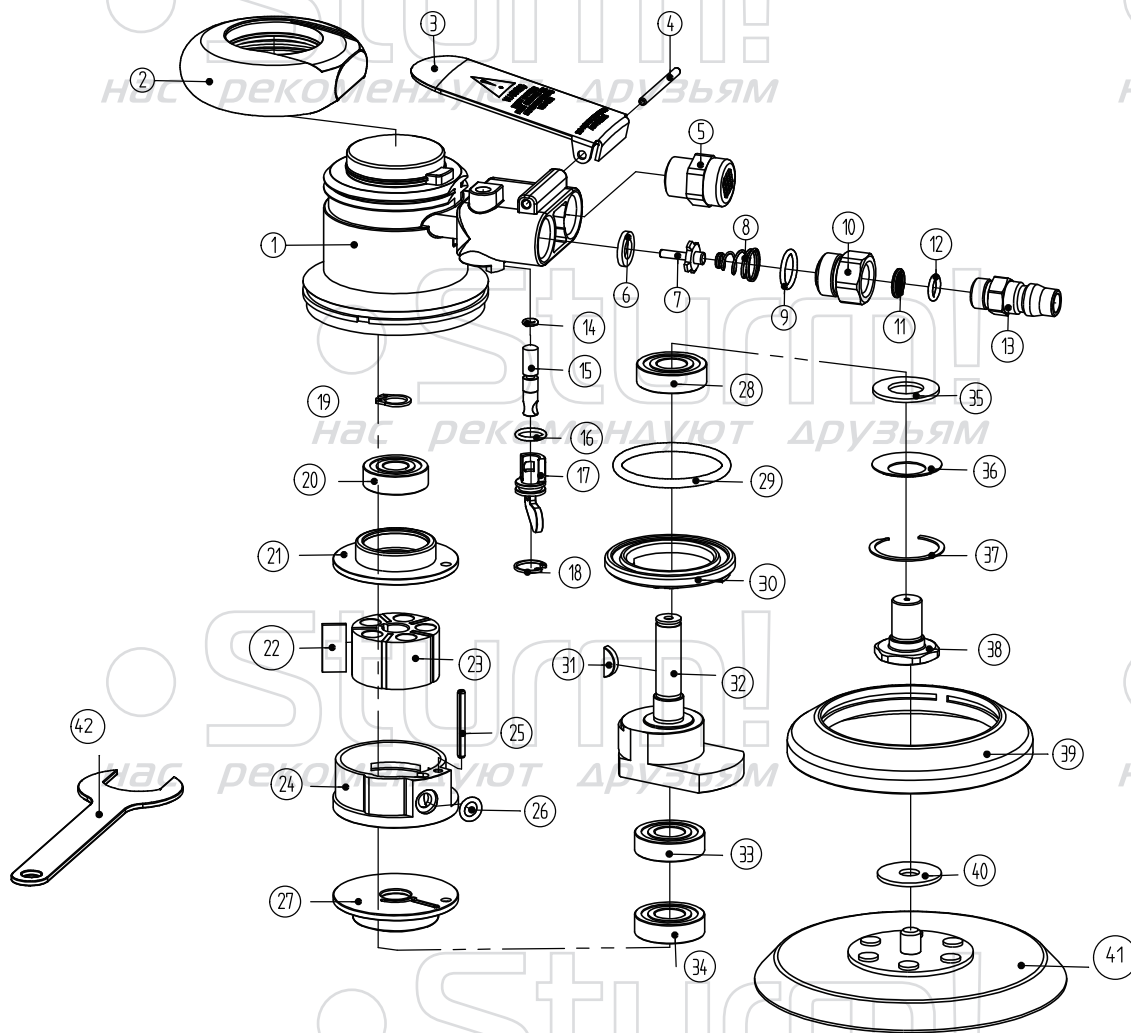


AU-1731-04



NO.	DESCRIPTION	NO.	DESCRIPTION
1	HOUSING	28	BEARING (6001Z)
2	HOUSING SHEATH	29	O-RING 46 X 3.1
3	TRIGGER	30	LOCK RING
4	PIN 3X40	31	SEMICIRCULAR KEY
5	MUFFLER JOINT	32	ANVIL
6	SWITCH PLUG	33	BEARING (6001RS)
7	REVERSE PIN	34	BEARING (6001RS)
8	SPRING	35	FELT
9	O- RING 12.5X1.8	36	DUST PROOF MAT
10	AIR INLET CONNECTION	37	RETAINER RING
11	MUFFLER WASHER	38	MAIN SHAFT
12	O- RING 7.1X1.8	39	PROTECTIVE SHIELD
13	JOINT	40	SHIM
14	O- RING6X1.5	41	SANDING PAD
15	SWITCH POLE	42	WRENCH
16	O- RING10X1.5		
17	ADJUST KNOB		
18	RETAINER RING 12		
19	RETAINER RING 10		
20	BEARING (6000Z)		
21	CYLINDER END PLATE		
22	ROTOR BLADE		
23	ROTOR		
24	CYLINDER		
25	PIN3X 28		
26	O-RING 10 X 1.8		
27	CYLINDER FRONT PLATE		

AU-1731-04-EX-20221021